

Instalacja Pythona, Pycharma i pierwszy projekt

Instalka do pobrania Pythona

Rekomendowana wersja 3.10.10

<https://www.python.org/downloads/windows/>

Stable Releases

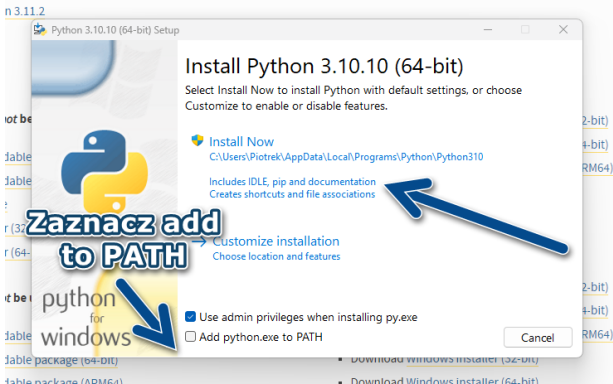
- [Python 3.10.10 - Feb. 8, 2023](#)

Note that Python 3.10.10 cannot be used on Windows 7 or earlier.

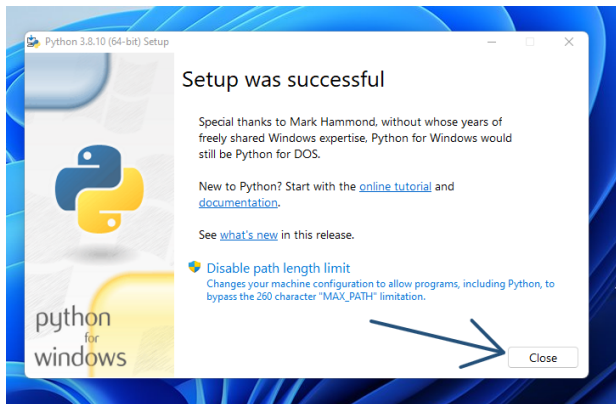
- Download [Windows embeddable package \(32-bit\)](#)
 - Download [Windows embeddable package \(64-bit\)](#)
 - Download [Windows help file](#)
 - Download [Windows installer \(32-bit\)](#)
 - Download [Windows installer \(64-bit\)](#)
- [Python 3.11.2 - Feb. 8, 2023](#)



Dodajemy do PATH i domyślnie:



Kończymy:



Instalacja Pycharm

Instalka: [https:](https://www.jetbrains.com/pycharm/download/#section=windows)

[//www.jetbrains.com/pycharm/download/#section=windows](https://www.jetbrains.com/pycharm/download/#section=windows)

Program edukacyjny:

<https://www.jetbrains.com/shop/eform/students>

Download PyCharm

Windows

macOS

Linux

Wersja Pro (edycja studencka za free)

albo Community za darmo

Professional

For both Scientific and Web Python development. With HTML, JS, and SQL support.

Download

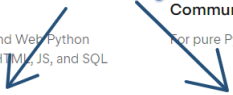
Free trial

Community

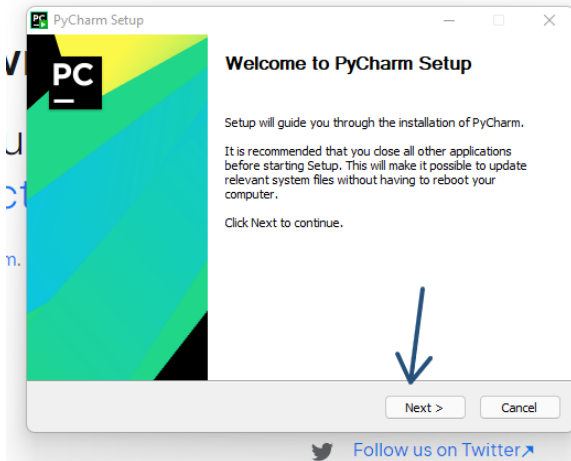
For pure Python development

Download

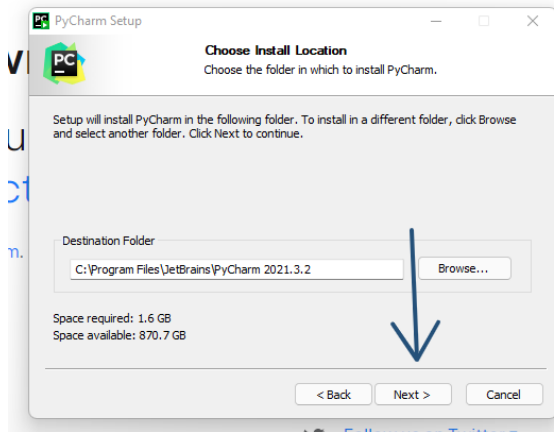
Free, built on open-source



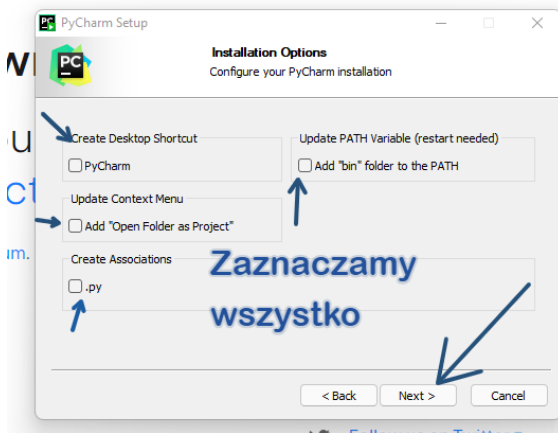
Przechodzimy dalej:



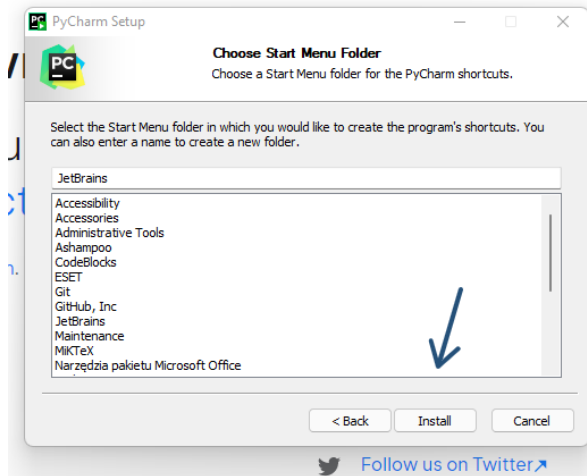
Wybieramy folder instalacji i dalej:



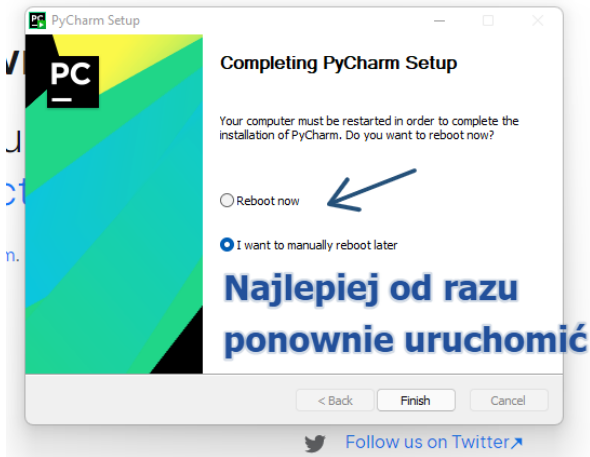
Tu najlepiej zaznaczyć wszystko i dalej:



Tu dalej:

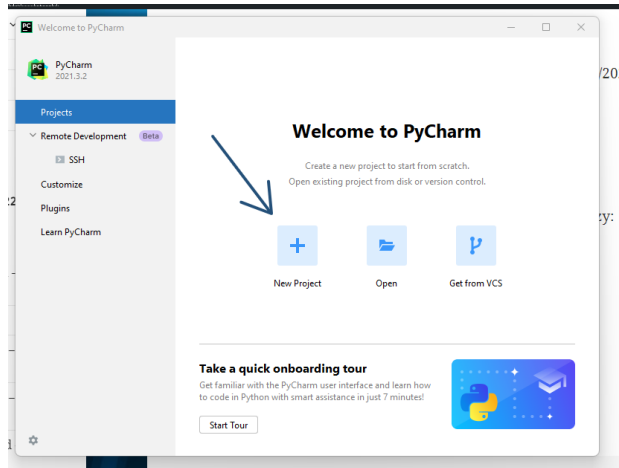


Najlepiej uruchomić od razu ponownie komputer:

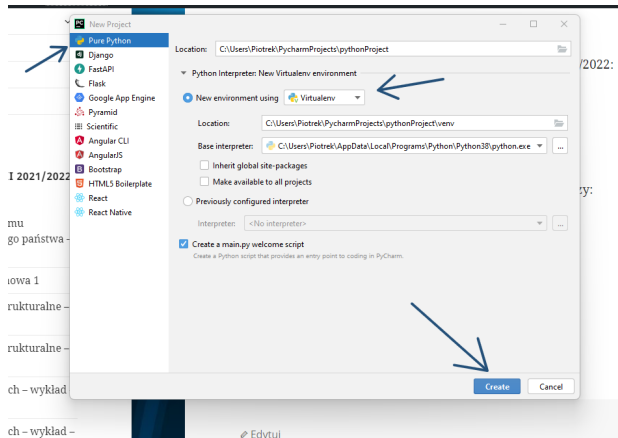


Pierwszy projekt

Wybieramy Nowy projekt:



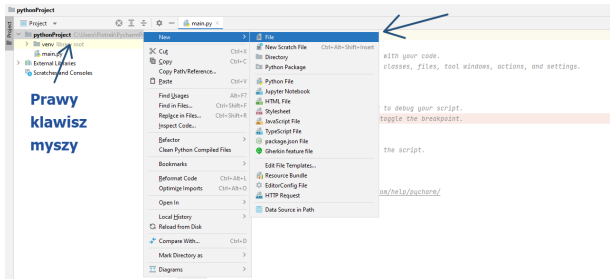
Wybieramy Pure Python i virtualenv:



Na komputerach w pracowni warto sprawdzić wersję.

W drugiej połowie semestru dodatkowa czynność.

Pod prawym klawiszem dodajemy nowy plik:



Wpisujemy nazwe requirements.txt

www.dario.com/rospy/pqqrta1.m/

New File
requirements.txt

**Wpisujemy nazwę
i Enter**

Wklejmy sugerowane wersje bibliotek (do spisania ze strony www):

```
Package requirements 'cyclcr==0.11.0', 'et-xmlfile==1.1.0', 'fonttools==4.29.1', 'kiwisolver==1.3.2', 'matplotlib==3.5.1', 'numpy==1
```

```
1 cyclcr==0.11.0
2 et-xmlfile==1.1.0
3 fonttools==4.29.1
4 kiwisolver==1.3.2
5 matplotlib==3.5.1
6 numpy==1.22.2
7 openpyxl==3.0.9
8 packaging==21.3
9 pandas==1.4.0
10 Pillow==9.0.1
11 pyparsing==3.0.7
12 python-dateutil==2.8.2
13 pytz==2021.3
14 scipy==1.7.3
15 seaborn==0.11.2
16 six==1.16.0
```

**Wklejamy
i zapisujemy**

Instalujemy

